

# SC1 YK 040 R

## 30X40 Half Covered Serie Cable Carrier

### PRODUCT DESCRIPTION

Cable Carrier chain by CROCODILE

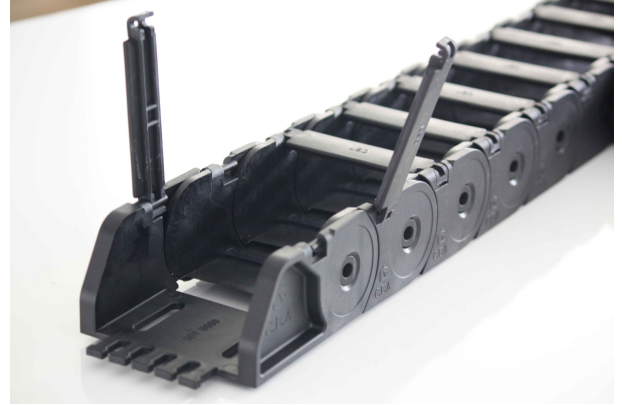
**Material Properties** PA6 With %30 Fiber Glass

### Applications

Gantry robot, Machining center, Textile machine, Welding machine, Feeder unit, Wood work machine, Fabric machines, metal machines, welding machines, aluminium machines

**Speed** 8 m/sec

**Operating Temperature** 30 °C -+ 130°C



30 Agustos Zafer Mah. Nasrettin Hoca Bulvarı No: 15 A/B  
Kayapa Organize Sanayi Bolgesi Nilufer / BURSA / TURKEY

info@crocodilecablecarrier.com

Tel: +90 224 441 06 88

Fax: +90 224 441 06 89

# SC1YK

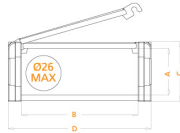
## CABLE CARRIERS MEDIUM SERIES

Inner Height (A) 30mm	Code	Radius	(A)mm	(B)mm	(C)mm	(D)mm	Weight Kg/Mt
• One side has fixed and complete cover, other side (radius side) has openable cover (cap)	SC1YK 040 R_01	75-100-150-200	30	40	40	56	0.955gr
• Bottom side is completely closed, upside is open	SC1YK 060 R_01	75-100-150-200	30	60	40	76	1.105gr
• Semi-open model • Should be used in supporting trays	SC1YK 080 R_01	75-100-150-200	30	80	40	96	1.198gr

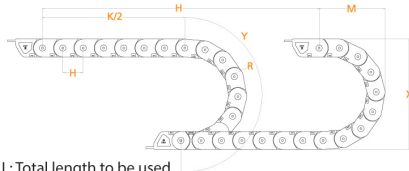
Maximum working speed :6M/S

Radius MUST be given in your orders. Example:

SC1YK 060 R75



R mm	H mm	X mm	M mm	Y mm
75	45	190	140.5	328
100	45	240	165.5	406
150	45	340	215.5	563
200	45	440	265.5	720

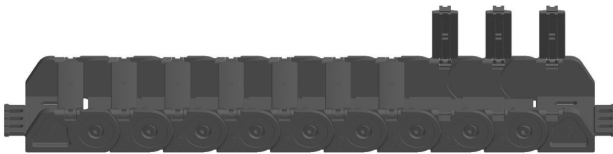


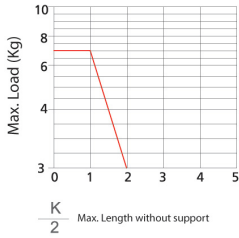
L: Total length to be used

K: Movement distance

Y: Radius

$$L: \frac{K}{2} + Y$$



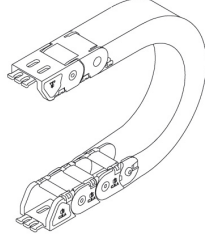
**IMPORTANT POINTS**

**Self-supporting Capacity Diagram**

Self-supporting capacity of the cable carrier according to weight of the cables and hoses

$$\frac{K}{2}$$

**How to choose end bracket**
**End bracket**

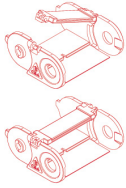
End brackets are the parts to be used to fix the cable carrier to the machine or equipment



Should be attached to the both ends of the cable carrier


**How to use support rollers:**

- Support rollers should be used after 2.5 meters
- Make sure that the cap (cover) is fixed properly
- Use an appropriate hand tool (screw driver) to open the cap
- Be careful not to damage the fixing nail of the cap (cover)



CABLE CARRIER CODE	END BRACKET CODE	A	B
SC1YK 040 R_01	SC1 B040	20	56
SC1YK 060 R_01	SC1 B060	40	76
SC1YK 080 R_01	SC1 B080	60	96

